



THE PRODUCTS USED

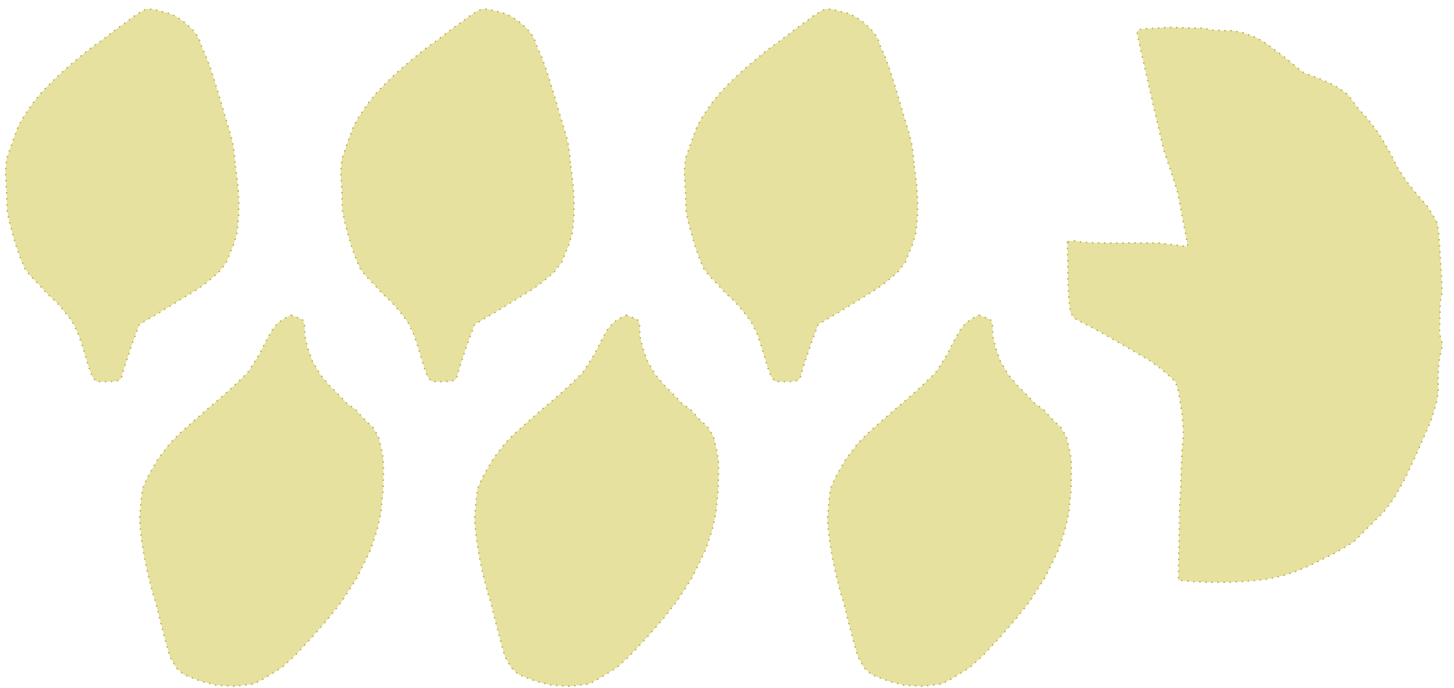


- AP00019 Fast Tack glue
- CC10025 Fimo Air
- FB20065 Brush flat size 10 (natural)
- SR20161 Aluminium rod
- SR90025 Wooden skewers
- TK10065 Scalpel No3 & 5 x 10a blades
- TK20027 Scissors

Plus White, Yellow, Red & Green
Acrylic Paint

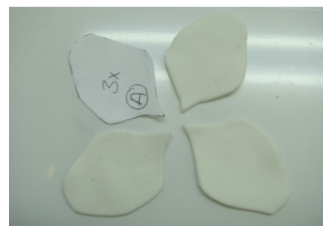
THE PETALS

Using a pair of **Scissors** (TK20027) cut out the paper templates for 6 petals and the trumpet



Roll out a small ball of **Fimo Air** (CC10025) to about 1mm thick then place the templates on the Fimo Air and cut out the petals with a **Scalpel** (TK10065).

Score lines into all the petals using a Skewer (SR90025) to represent the veins as shown in the picture.



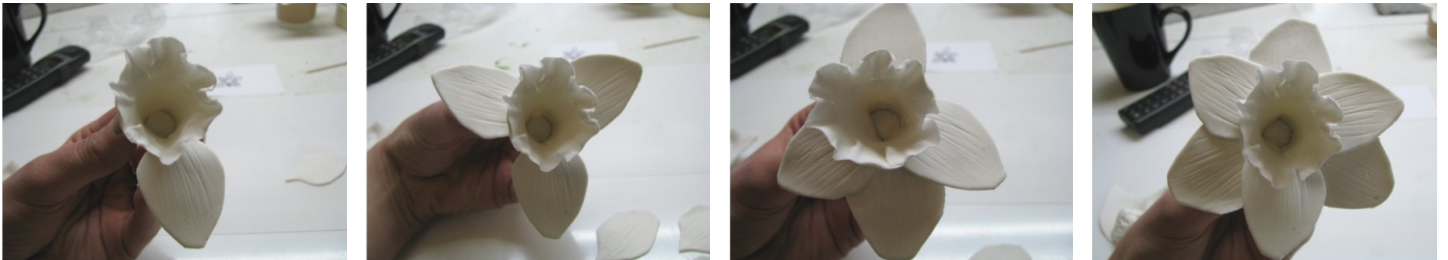
THE TRUMPET

Place the template of the trumpet on the air dough and cut out with a **Scalpel** (TK10065). Roll the skewer firmly across the top of the trumpet to create the ruched edge effect. Then wrap the cone round to create the trumpet finishing it by placing a small ball of dough at the bottom of the cone.



ADDING THE PETALS

Add three petals to the base of the trumpet arranging them at 120° intervals. Then in the gaps arrange the other three petals to complete the flower.



Hardening and sealing the dough

Support the petals and leave overnight to dry then seal the dough by painting with watered down PVA glue.



Painting the petals

Paint with yellow acrylic paint or for other daffodil varieties mix the acrylic paint to give the orange colour for the trumpet.



The Stems

Fix an Aluminium Rod (SR20161) into the base of the flower to create the stems using a small ball of dough to fix in place. Then paint the stem green with acrylic paint.